

Report of the Director of Environment and Housing

Report to North West (Outer) Area Committee

Date: 4th November 2013

Subject: Annual Community safety Report

Are specific electoral Wards affected?	<input checked="" type="checkbox"/> Yes	<input type="checkbox"/> No
If relevant, name(s) of Ward(s): Adel & Wharfedale, Guiseley & Rawdon, Horsforth, Otley & Yeadon		
Are there implications for equality and diversity and cohesion and integration?	<input type="checkbox"/> Yes	<input checked="" type="checkbox"/> No
Is the decision eligible for Call-In?	<input type="checkbox"/> Yes	<input checked="" type="checkbox"/> No
Does the report contain confidential or exempt information?	<input type="checkbox"/> Yes	<input checked="" type="checkbox"/> No
If relevant, Access to Information Procedure Rule number:		
Appendix number:		

Summary of main issues

1. This report provides crime statistics for Outer North West Leeds and details of key activity to address crime and anti social behaviour issues. The report recognises the fall in overall crime in Outer North West wards during 2012/13 and the challenges faced during the coming year.

Recommendations

2. The Area Committee is asked to:
 - a. Note the contents of the report and offer comments
 - b. Note and offer comments on the Area Committees role in reducing burglary and other crime

1 Purpose of this report

- 1.1 This report is the annual community safety report, providing Members with details of the community safety activity undertaken during the last 12 months. The report will also provide details of crime data, making comparisons with previous years.

2 Background information

- 2.1 We want to be the best city in the UK with the best community safety partnership and services. Safer Leeds will focus on the outcome that “people in Leeds will be safe and feel safe in their homes, in the streets and the places they go”. The strategic assessment for 2013/14 has highlighted a number of priorities for Leeds:

- Strengthening the partnership approach to support a more focused approach to tackle Domestic Abuse
- Continued focus on reducing domestic burglary and its impact across Leeds
- Effectively tackle and reduce anti-social behaviour in our communities
- Improve our understanding and approach to deal with Child Sexual Exploitation
- Reduce re-offending
- Tackle substance misuse

- 2.2 The North West Divisional Community Safety Partnership is a multi agency partnership chaired by the Police and West North West Homes and includes partners from Fire Service, Youth Service, Youth Offending Service, Safer Leeds and the Community Safety Area Lead Member from each of the four Area Committees in West North West Leeds. The Partnership meets four times a year and sets the strategic direction for partnership work, examining performance and agreeing local priorities. The work of the group is accountable to the Safer Leeds Executive and the Safer and Stronger Communities Board, who receive regular reports of the activity undertaken.

3 Summary of key Actions

- 3.1 A number of factors have a bearing on crime, criminologists have placed these factors into three broad categories:

- A suitable target or opportunity, for example: valuable items which can be removed relatively easily such as laptops near an open window, vehicles with unlocked doors and a valuable item on show, etc
- A motivated offender, for example: someone whose values or beliefs make stealing acceptable, drug dependency, someone motivated by greed, etc
- A low likelihood of getting caught, for example: no Police or security guards, a neighbourhood with a low level of reporting crime, no natural street surveillance, etc

- 3.2 Traditional problem solving techniques aim to reduce crime by impacting on these three categories:

- Working to educate the victim (leaflet drops, face to face crime prevention advice, etc)

- Tackle the offender (known as offender management; visit known offenders, tenancy action, curfews, criminal sanctions – prison, etc)
- Undertake work on the built / natural environment to reduce crime opportunities in the locality such as improving natural surveillance or environmental works such as cutting hedges back, secure by design, etc).

3.3 The following key actions have been delivered through the Divisional Community Safety Partnership during the last 12 months:

3.4 Domestic abuse work is primarily delivered through 3 strands; working to support the victim, taking appropriate action against the perpetrator and raising the awareness and confidence of officers in identifying domestic abuse and making appropriate referrals to special and support agencies. Examples of this include:

- A Domestic Violence MARAC chaired by Safer Leeds, where a number of partners attend to discuss high risk domestic violence cases. The focus is on support to victims and strong co-ordinated action against perpetrators. Regular attendees include the Primary Care Trust, Social Care, West Yorkshire Police and Leeds Domestic Violence Services.
- Awareness campaign heavily supported by the Leeds Domestic Violence Team, which works with partners during the 16 days of action on Domestic Violence from 25th November to 10th December, linking in with this world wide initiative. Awareness raising is co-ordinated through a media campaign and activities with partner organisations such as schools to promote the White Ribbon Campaign.
- In Outer North West all of the children's centres have achieved at least Level 1 of the Safer Leeds domestic violence Quality Mark. Work with abusive dads is about to be rolled out to Early Start Teams across the city.

3.5 Burglary remains a high priority for the City and the North West Division. A City-wide strategic burglary group meets monthly lead by Chief Superintendent Dave Oldroyd. Significant local initiatives have included:

- top 10 street initiative to engage with residents, refer into Outer North west funded target hardening scheme and provide crime reduction advice, promote immobilise.com, and promote laptop and phone tracking software
- multi agency action days to deliver a variety of messages and raise awareness about burglary and other crimes through leaflets, doorstep engagement, working with partners to have a greater impact by undertaking joint visits. Ten action days were held in Outer North West during this year.
- Arrange environmental audits to address any environmental issues impacting on burglary for example overgrown hedges, obscured street lighting, broken street lighting, etc
- Taking tenancy enforcement action against prolific offenders and the introduction of a local lettings policy in Holt Park to manage offending behaviour and provide incentives to engage with support agencies
- Operation Optimal which targets patrols to areas where statistics says a burglary may occur and visits to burglary victims and their neighbours (either side and back / front).

- Promoting Immobilise.co.uk through the partnership and its mailing lists and activities to increase registrations to the national property database

3.6 Leeds ASB Team (LASBT) West North West Performance Data

Leeds Anti-Social Behaviour Team receives requests for service (Enquiries) via the contact centre, the local housing office, West Yorkshire Police, Stop Hate UK, elected members and MP's. The team has a number of core performance aims:

1 & 2 Day response to Enquiries from Contact Centre - LASBT West received 1045 enquires in 2012/13. 50.6% of these enquiries relate to ALMO properties. 100% of enquiries were responded to within service standards.

Initial Contact with Customer within 10 days (SSTD3) – 98.7% of customers were contacted within 10 days of a case being opened.

10 day Customer Update (SSTD5) – The year-end cumulative performance for this measure showed that 95.4% of customers were contacted every 10 days.

Initial Contact with Perpetrator within 10 days (SSTD4) – The year-end cumulative performance for this measure showed that 91.4% of perpetrators were contacted within 10 days of a case being opened.

Customer Satisfaction with service - 4 week case onset survey – 89.1% of respondents stated they were either very satisfied or satisfied, with the service they had received.

Customer Satisfaction with service and case outcome – Closed Case survey - 95.2% of respondents stated they were either very satisfied or satisfied, with the service they had received. 95.8% of respondents were either very satisfied or satisfied, with the investigation carried out by the Case Officer and 91.0% were satisfied with the case outcome.

ASB Caseload

The table below shows a breakdown of the cases investigated and closed in the Outer North West area during 2012/13.

Ward Boundaries	Number of Cases Investigated
Horsforth	21
Guiseley & Rawdon	15
Adel & Wharfedale	17
Otley & Yeadon	25

ASB Case Studies by Ward Area

This section provides a summary of some of the ASB cases that have been investigated by the team during 2012/2013.

Adel and Wharfedale

- A property on Holtdale Way was subject to a Closure Order following numerous complaints of Rowdy behaviour and the tenant voluntarily terminated their tenancy rather than be formally evicted.
- In a case on Holtdale Way linked to the above, LASBT have worked closely with Signpost and Leeds Housing Options to disperse a family who were engaging in ASB. The mother and her adult children (who were the main cause for concern) have been re-housed separately in single person accommodation across the city with support packages in place to try and break the cycle of offending.

Otley and Yeadon

- An introductory tenant on Queensway, Yeadon has been ordered to leave, following a conviction for possession with intent to supply cannabis at the address. LASBT are in the process of applying for an eviction warrant.
- LASBT were involved in a case on Turner Crescent, Otley where a Council tenant was being harassed by an owner occupier. LASBT were seeking an injunction to protect the council tenant, however during the course of these proceedings the perpetrator was dealt with criminally and LASBT provided the information needed to help secure an Anti Social Behaviour Order on conviction.

3.7 Child Sexual Exploitation (CSE) is a new area of work developed during the last year. There is a city wide CSE Steering Group chaired by Childrens Services. The group aims to develop processes and services to meet the challenges presented by CSE. The group has recently approached Safer Leeds and asked Safer Leeds to help develop and shape local delivery of CSE work.

- The safeguarding of individuals at risk of CSE is delivered through the existing safeguarding process of joint working between the Council and Police. These Officers work very closely together to share information and often work from the same office in 2 Great George Street to ensure an integrated approach.
- The Area Community Safety Co-ordinator role has taken a lead on CSE work locally and chairs a CSE practitioner's forum for West North West Leeds which looks at identifying local CSE gaps in services with a view to finding local solutions or working with the Leeds wide CSE Steering Group to raise and address concerns. Local partners involved in the Practitioners group include Cluster co-ordinators, Targeted Services Leads, School Nurses, Police and Social Workers. The group has met on 2 occasions to date and will aim to meet quarterly. Work is underway to identify the training needs of frontline staff to help develop a training plan for West North West Leeds and develop better joint working to tackle this issue.
- In June 2013 a Practitioners workshop for CSE was held to provide an opportunity to raise awareness of the issues relating to CSE. The Event was organised by the Area Community Safety Co-ordinator and involved presentations from Blast and ISIS, 2 agencies developing work in CSE. The session was a taster for front line

staff such as social workers, healthcare professionals, school staff, housing Officers and Police officers. The event was attended by over 30 people. Further sessions are planned for frontline staff and practitioners.

- 3.8 Reduce Re-offending is delivered in partnership between West Yorkshire Police, Probation, Youth Offending Service, Leeds City Council and other partners. There is a mix of partnership working at city-wide level to engage with prolific offenders and more locally co-ordinated work to engage with offenders who are at risk of becoming prolific. Typically, the engagement aims to address the causes of offending and help reduce the opportunities to offend by helping an offender secure training or a work placement for example.
- 3.9 The local group is chaired by Safer Leeds and includes support from West Yorkshire Police, Probation, Youth Offending Service, Signpost, Connexions and other partners who come together to look at additional focused support provided to individuals involved in burglary and other priority crime. The group works across the locality and seeks to address the support needs of individuals and families to help them to stop offending. This support could be through training opportunities provided through Connexions, additional support by Youth Offending Service, Signpost working with the family offering intensive support. Since its inception the group has discussed 32 cases and closed 12 cases due to either engagement with services and reduction in offending or incarceration. The number of cases is fluid with about 20 at any given time.
- 3.10 Substance misuse continues to be an active priority for the Neighbourhood Policing Team. Members of the public continue to provide the Police with positive leads about Cannabis and other types of drug dealing. One of the significant emerging issues for the city is the sale and use of new psychoactive substances, so called legal highs. Safer Leeds has a three stranded approach to this new area of work:
- **Intelligence gathering**
 - Operation Nightshot established on Police systems and intelligence sought from across the partnership.
 - Questionnaire distributed to adult drug users through the drug intervention program.
 - liaison with agencies who provide drug intervention work.
 - Partnership work with event organisers.
 - Local intelligence gathered to identify local retail outlets and understand the customer profile.
- **Education**
 - All Safer Schools Police Officers provided training input and package to deliver in secondary schools.
 - Media strategy developed with key features on Look North and YEP and national newspapers including the daily Mail and The Sun.
 - Key partners provided training input including elected members, youth services.
 - Billboard campaign and marketing material produced.

- **Enforcement**
- Warning letters served to all retail outlets.
- Dedicated CPS lawyer established.
- convictions for selling intoxicating substances to under 18's - first conviction nationally using this legislation to tackle NPS
- Ongoing prosecution under Sec 9 Misuse of Drugs Act - selling articles for the preparation and administration of controlled drugs in respect of articles with cannabis leaves etc on
- Market management have served warning letters to all relevant stall holders

4.0 CCTV (Delegated Function)

- 4.1 LeedsWatch' provides a monitoring service for public space surveillance cameras covering open spaces across Leeds. The CCTV control room is staffed, and cameras are recorded 24 hours per day, 365 days a year. The service also provides two mobile CCTV vehicles for deployment within communities across Leeds. The main objective of the service is to reduce crime and the fear of crime through the use of CCTV technology, leading to improved crime prevention, and an increase in the detection and prosecution of offenders. The LeedsWatch service works in partnership with a large number of internal and external partners such as; Urban Traffic Control (UTC), Emergency Planning, Leeds Anti-Social Behaviour Team (LASBT), West Yorkshire Police, WY METRO and other Local Authorities across the West Yorkshire sub-region
- 4.2 CCTV is one of a number of Service functions delegated to Area Committees. The Area Committee's role in relation to this function is to 'maintain an overview of the service in the Committee area and receive regular information about it.' There are currently a total of 9 public space surveillance CCTV camera's monitoring the Outer North West Committee Area, via the Central CCTV Control Room at Middleton, they are located in the following areas:

Yeadon – Otley – Horsforth

The total charges levied to the Outer North West Area Committee regarding public space surveillance camera(s) are outlined as follows:

Location	Monitoring and Maintenance	BT Charges	Total cost
New Road Side Horsforth	£1000	£821	£1821
Old Ball Roundabout Horsforth	£1000	£1,225	£2,225
Otley (5 cameras)	£5000	£6,863	£11,863
Yeadon (3 cameras)	£3,000	£3,442	£6,442

Within the Outer North West Committee Area there has been a total of 6 arrests on camera: 1 arrest for damage, 1 arrest for driving over the prescribed limit and 4 for burglary. CCTV footage has been requested in relation to 77 further incidents within the Outer North West area for a various number of offences which provides evidence in relation to the criminal investigations relevant to identification of suspect(s).

- 4.3 The CCTV Vans are now primarily used to respond to reports of Noise nuisance which is a major cause for concern across the city. The out of hours noise nuisance service supports the work of the Leeds ASB Teams by providing evidence in relation to noise nuisance cases.
- 4.4 Supporting the city's most vulnerable residents is also a priority. The LeedsWatch service is now responsible for providing a first response to Care Ring alarms. On call 24 hours a day, 7 days per week, this service responds to alarms from mainly elderly clients who may have fallen or find themselves in need of support. Officers attend to the alarm call and contact emergency services, family members or other appropriate individuals, staying with the client to provide support and re-assurance until further help arrives.
- 4.5 In order to ensure that the service is making the best use of its resources, a full service restructure has now commenced with a view to offering best value for the department. In particular, discussions are taking place with the Anti-Social Behaviour Teams, Environmental services, West Yorkshire Police and Housing Leeds to look at how the various services can better link together to improve service delivery and provide a more pro-active response to issues of public concern.

5.0 Area Committee Funded Projects

- 5.1 During 2012 / 13 the Area Committee funded Police Off-Road Bikes which proactively patrol green spaces and work with the Neighbourhood Policing team to tackle the nuisance caused in communities by off road bikes. The project also worked closely with the Councils Park Ranger service to undertake joint patrols and deliver advice and training to schools and groups who may undertake bike riding. The project is performance managed through the Community Safety Sub Committee and met the expected outcomes of 2012/13.
- 5.2 The Area Committee also funded target hardening which is delivered in the form of a 50% grant. CASAC were commissioned to deliver this project and provide a free security check which is undertaken with the resident. CASAC will then recommend and agree the work required with the resident; this may include new door locks, window locks and other security items. The Resident is expected to cover the cost of the first £75 of work and any costs above £150. This project is performance managed through the Community Safety Sub Committee and met the expected outcomes of 2012/13.

6.0 Analysis of Crime Figures

- 6.1 Appendix 1 provides an overview of crime figures for all 4 wards which make up Outer North West Leeds (Adel & Wharfedale, Guiseley & Rawdon, Horsforth, Otley & Yeadon). The figures presented cover the period April 2010 – March 2013 and relate

to all crime types, including Fraud & Forgery, handling stolen goods, sexual offences and other thefts. The difference and percentage columns relate to a year on year comparison for 2011/12 and 2012/13.

- 6.2 During this period crime has fallen in all of the wards, with significant reductions delivered in Adel & Wharfedale ward (188 fewer crimes, a 19% reduction) and Otley & Yeadon Ward (218 fewer crimes, 18% reduction). It is important to note that these figures include all crimes as mentioned above. The following paragraphs will explore these outcomes in more detail.
- 6.3 The subsequent Appendices (numbered 2 – 5) will concentrate on the following crime types: burglary, robbery, theft of and theft from vehicles, criminal damage and violent crime.
- 6.4 Appendix 2, provides an overview for Adel & Wharfedale ward and shows that all crime reduced, burglary reduced by 32% (51 fewer victims). During this period, the following work was delivered in Adel & Wharfedale:
- Two Co-ordinated multi agency action days in Holt park focusing on the environment and anti social behaviour
 - 293 properties were target hardened through the Area Committee funded target hardening project
 - Review of the Local Lettings Policy introduced in the Holtdales in 2012
 - Specific work was undertaken to tackle anti social behaviour in Holt Park and some good results for anti social behaviour which had a calming influence in the area (see 3.6)
 - Key messages about burglary and dark nights delivered through schools via the clusters
 - Fire Service talks to Prince Henry school about “gone in a flash” relating to bonfire night and firework safety and “one way ticket” about road safety

Anti social behaviour continues to be a challenge in the Holt Park area. The Multi Agency Tasking Group has made it a priority to look at the key individuals involved in anti social behaviour and low level criminality. The aim is to co-ordinate asb action to deliver quicker results. The Simple 2 Start Police initiative will be delivered in partnership with the council and other partners to help identify the long standing problems in the area and co-ordinate action to address these issues.

- 6.5 Guiseley & Rawdon ward achieved a decrease in burglary of 38 offences (43%), appendix 3. Theft from motor vehicle increased by 47 offences (53%). The biggest challenge for this area of work continues to be items left on display in vehicles. PCSOs work very hard to bring to this to the attention of members of the public. During this period the following work has been delivered:
- Operation Optimal - visits to burglary victims and their neighbours and target patrols to hotspot areas
 - An Action day on the Queensway and Shakespears with visits to the Westside Retail Park to engage with motorists

- 78 properties were target hardened through the Area Committee funded target hardening project
- Key messages about burglary and dark nights delivered through schools via the clusters
- Fire Service talks to Benton Park, Guiseley and St Marys schools about “gone in a flash” relating to bonfire night and firework safety and “one way ticket” about road safety

The arrest and incarceration of some key offenders has seen reductions in the latest figures for theft from motor vehicles. There is an ongoing challenge in raising awareness about leaving valuables on show in vehicles. However, a key challenge for the area is burglary other (thefts from sheds and garages). The target hardening project funded through the Area Committee is a positive contribution to tackling this issue, but further work is required to continue to raise awareness about insecure properties, poor locks and the steps residents can take to reduce the chance of becoming of a victim of burglary Other. The Simple 2 Start Police initiative, to be delivered in partnership with the council and other partners will help identify the long standing problems in the area and co-ordinate action to address these issues.

6.6 Appendix 4 provides details about Horsforth ward and shows a rise in Theft of motor vehicle (15 offences 150%) and violent crime increasing 10% (9 offences). All other crime types experienced a decrease, with burglary reducing by 27 (18%). This increase is largely due to 2 in 1 burglaries with the car keys taken during a burglary. examples of some of the work undertaken in Horsforth ward include:

- Two action days at St James and King Georges focusing on anti social behaviour
- Operation Optimal - visits to burglary victims and their neighbours and target patrols to hotspot areas
- Particular attention to the Newlays to tackle burglary with PCSOs and CASAC door knocking properties and providing crime reduction advice
- 78 properties were target hardened through the Area Committee funded target hardening project
- Key messages about burglary and dark nights delivered through schools via the clusters
- Fire Service talks to Horsforth High school about “gone in a flash” relating to bonfire night and firework safety and “one way ticket” about road safety

The challenge for Horsforth continues to be burglary and the theft of motor vehicles connected to burglary. Work is ongoing to raise awareness about the steps residents can take to reduce the risk of burglary. The target hardening initiative funded by the Area Committee is a positive contribution to tackling this issue. The Police have made some good arrests relating to burglary offenders leading to positive outcomes. Work will continue to increase awareness about burglary and the steps residents can take to reduce their risk of becoming a victim.

6.7 Appendix 5 shows Otley & Yeadon ward experienced a reduction in burglary (16 offences, 18%) and Criminal Damage (38 less offences, 19%). Robbery showed a small increase of 2 offences and similarly theft of motor vehicle increased by 8 offences. During this period the following activity of note was delivered:

- Two action days on the Weston Estate to tackle crime and anti social behaviour
- 77 properties were target hardened through the CASAC target hardening project
- Key messages about burglary and dark nights delivered through schools via the clusters
- Fire Service talks to Prince Henry High school about “gone in a flash” relating to bonfire night and firework safety and “one way ticket” about road safety

The key challenges for the area are around anti social behaviour and the night time economy. Work is ongoing with West Yorkshire Police and Council Licensing staff working together to address any concerns. The proposed Cumulative Impact Policy will help strengthen this work.

7 Corporate Considerations

7.1 Consultation and Engagement

The projects highlighted in this report will include consultation and engagement under the theme of crime and anti social behaviour with the aim of providing crime reduction advice and to increase reporting.

7.2 Equality and Diversity / Cohesion and Integration

Engagement events and projects take account of equality and diversity in their delivery. Considerations such as date, time, venue, access all have an impact on equality and diversity in relation to ensuring events are accessible to all members of the community.

7.3 Council Policies and City Priorities

Effectively tackling crime and anti social behaviour is a strategic priority in the Safer Leeds Plan 2011-2015.

7.4 Resources and Value for Money

Projects and work highlighted in this report have been funded through a mixture of Safer Leeds, Area Committee, West North West Homes and both Universities. Further opportunities for partnership funding will be explored through the coming year.

7.5 Legal Implications, Access to Information and Call In

There are no legal implications or access to information issues for this report. This report is not subject for call in.

7.6 Risk Management

Risk implications and mitigation are considered for each project.

8 Conclusions

- 8.1 The reduction in crime across all four ward areas is welcomed, particularly in the context that crime is low in the Outer North West area. However, there continues to be a number of areas of risk. Travelling criminals present an ongoing challenge for

the area. Additionally, ongoing awareness raising is required to highlight issues relating to burglary other, particularly theft of very expensive pedal cycles from sheds and the steps residents can take to reduce them being a victim of such crime. The Simple 2 Start initiative will aim to impact on the challenges highlighted in this report and continue to positively impact on crime figures.

8.2 West Yorkshire Police have commenced discussion about how they might respond to budget pressures and work has started to reduce the number of Divisions and Senior Police staff in Leeds. The proposal is that Leeds reduces to one division serving the whole city, commanded by a Chief Superintendent and reducing the number of superintendents, Chief Inspectors and Inspectors. Current proposals suggest 11 neighbourhood teams aligned to Area Committees and one team dedicated for the city centre. Members have been briefed on the proposals and their views sought. West Yorkshire Police are exploring co-location options with partners to ensure front line services are enhanced.

9.0 Recommendations

9.1 Members of the Outer North West Area Committee are requested to:

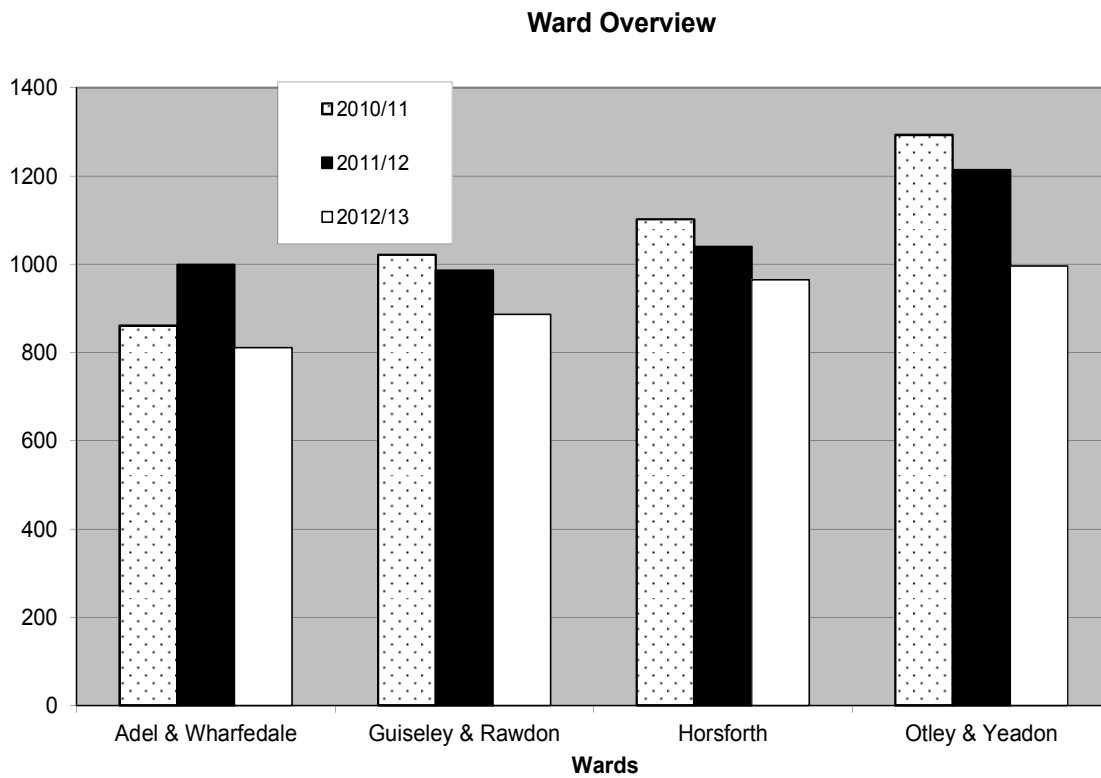
- a. Note the contents of the report and offer comments
- b. Note the Area Committees role in reducing burglary and other crime

10.0 Background documents

10.1 None

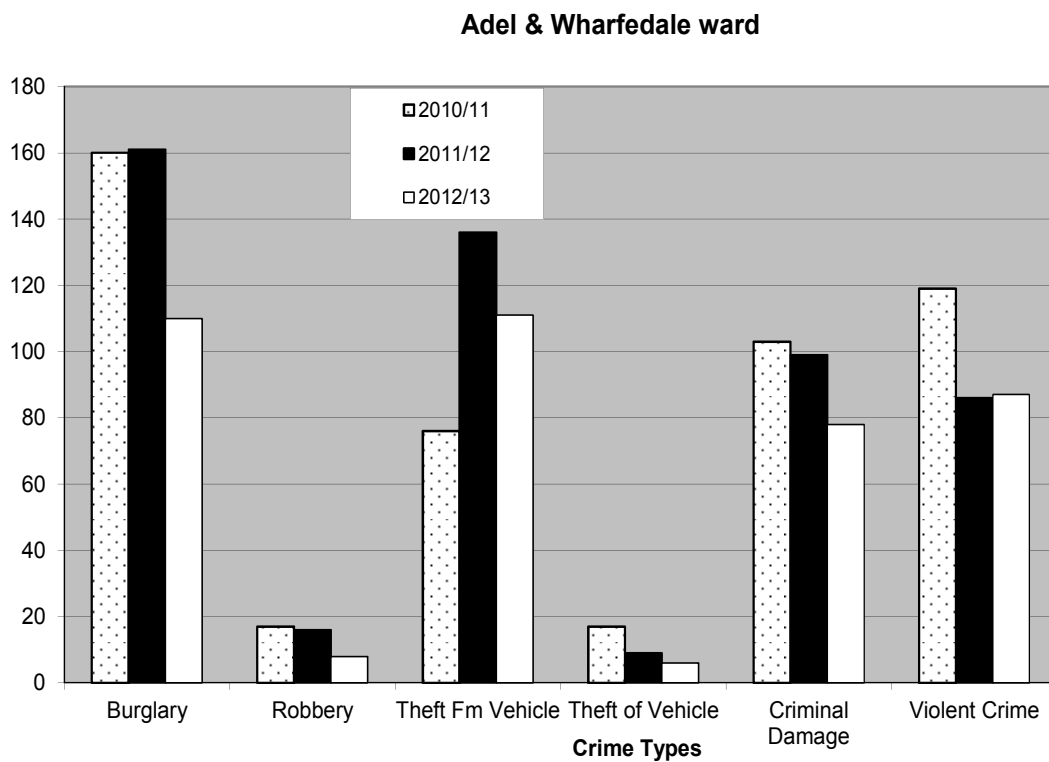
Appendix 1

Ward Overview			Variation		
Ward	2010/11	2011/12	2012/13	Difference	Reduction
Adel & Wharfedale	861	999	811	-188	-19%
Guisley & Rawdon	1022	986	887	-99	-10%
Horsforth	1102	1040	965	-75	-7%
Otley & Yeadon	1293	1214	996	-218	-18%



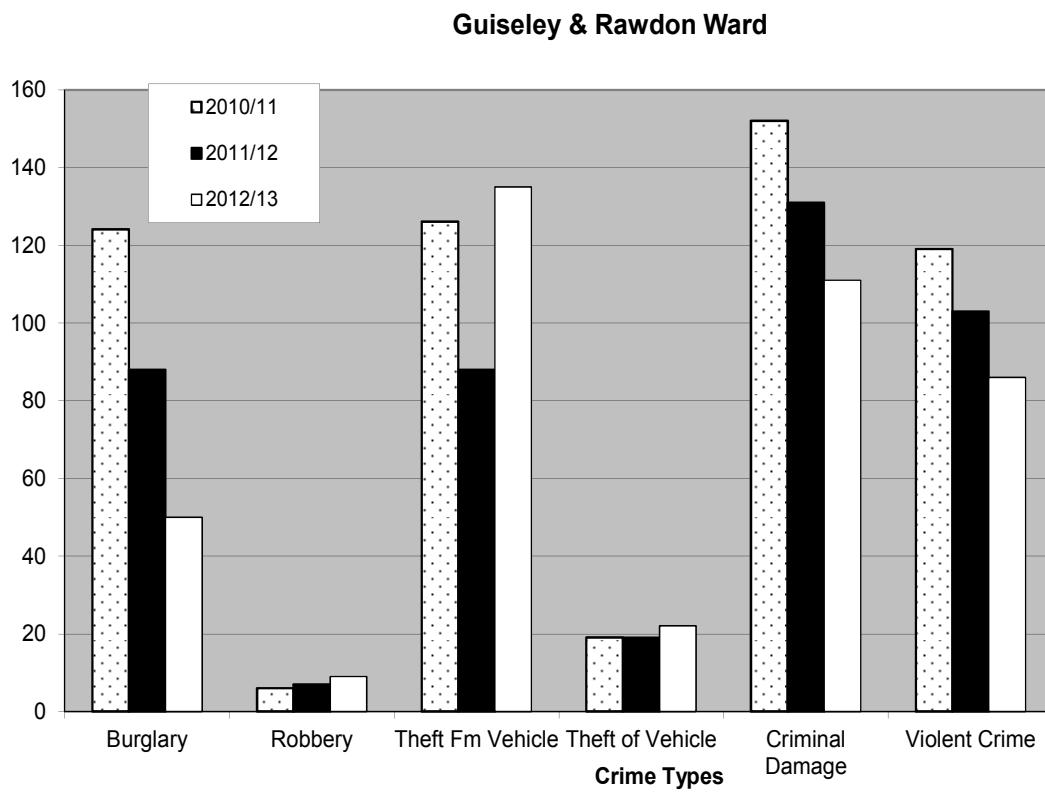
Appendix 2

Adel & Wharfedale				Variation	
Crime Types	2010/11	2011/12	2012/13	Difference	Reduction
Burglary	160	161	110	-51	-32%
Robbery	17	16	8	-8	-50%
Theft Fm Vehicle	76	136	111	-25	-18%
Theft of Vehicle	17	9	6	-3	-33%
Criminal Damage	103	99	78	-21	-21%
Violent Crime	119	86	87	1	1%



Appendix 3

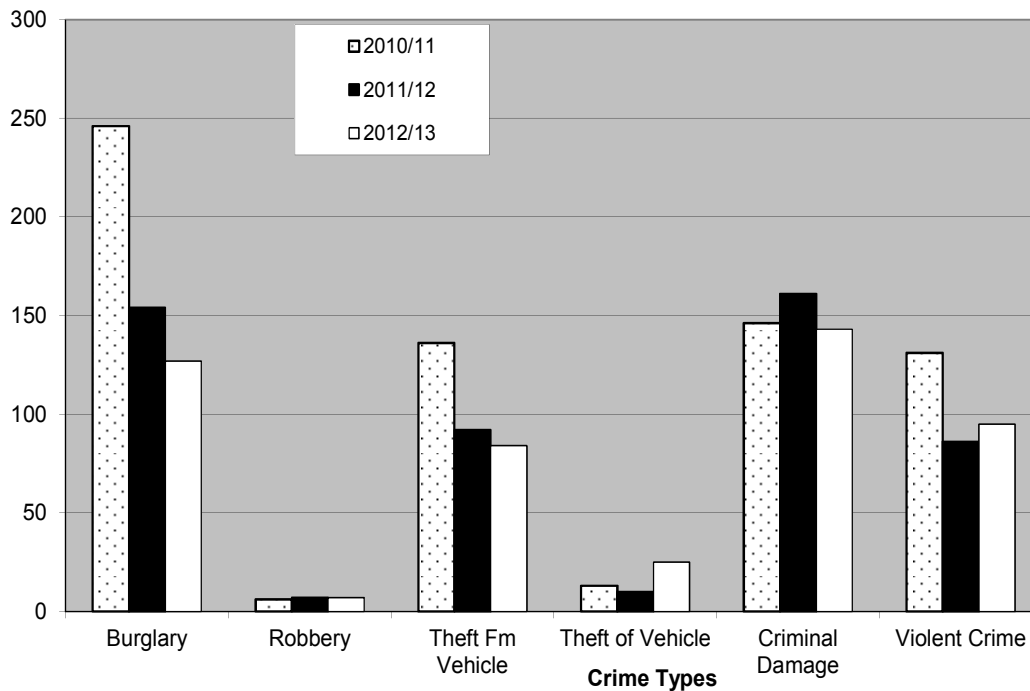
Guiseley & Rawdon Crime Types				Variation	
	2010/11	2011/12	2012/13	Difference	Reduction
Burglary	124	88	50	-38	-43%
Robbery	6	7	9	2	29%
Theft Fm Vehicle	126	88	135	47	53%
Theft of Vehicle	19	19	22	3	16%
Criminal Damage	152	131	111	-20	-15%
Violent Crime	119	103	86	-17	-17%



Appendix 4

Horsforth				Variation	
Crime Types	2010/11	2011/12	2012/13	Difference	Reduction
Burglary	246	154	127	-27	-18%
Robbery	6	7	7	0	0%
Theft Fm Vehicle	136	92	84	-8	-9%
Theft of Vehicle	13	10	25	15	150%
Criminal Damage	146	161	143	-18	-11%
Violent Crime	131	86	95	9	10%

Horsforth ward



Appendix 5

Otley & Yeadon				Variation	
Crime Types	2010/11	2011/12	2012/13	Difference	Reduction
Burglary	150	89	73	-16	-18%
Robbery	12	3	5	2	67%
Theft Fm Vehicle	123	107	115	8	7%
Theft of Vehicle	27	8	16	8	100%
Criminal Damage	200	197	159	-38	-19%
Violent Crime	201	159	155	-4	-3%

Otley & Yeadon ward

